

INCLINE PINES

2025 Wildfire Risk Mitigation Report

Introduction

Incline Pines is a community of 40 freestanding homes on 12 acres overlooking Lake Tahoe's north shore.

Background

The community was built in the mid-1970s as a condominium development- although it doesn't fit the common "condo" definition.



Open space

Each unit comes with roughly one-third acre of undivided open space.

All that open space comes with responsibilities.



Fire-safe programs

Defensible space

The Incline Pines Homeowners Association spent \$34,000 in 2024 to clear pine needles, brush and the remove dead or dying trees identified by a licensed arborist.

The HOA works closely with the North Lake Tahoe Fire Protection District to identify potential fire hazards.





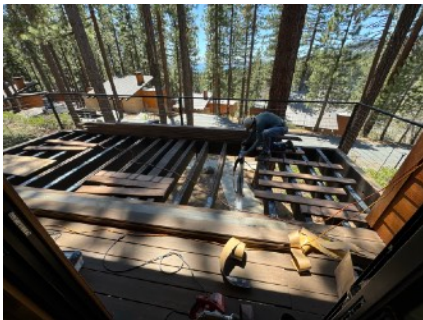
Fire-resistant siding

The homes were originally built with wood and shake siding (pictured above).

All the original siding has been replaced with fire-resistant fiber cement material.

Fire-resistant decks

Many homeowners have replaced their original wood decks with fire-resistant composite lumber such as TimberTech and Trex.



Fire-resistant roofs

The roofs are a combination of metal and asphalt sheeting.

There are no attics or crawlspaces in the community, further restricting the ability of a wildfire to spread to the inside of the structures.

There are also no carports or garages.

BurnBot

The HOA is in discussions with BurnBot, a California-based company operating remote-controlled machines that masticate and burn fuels in place to create “halo of protection”.



Summary

Incline Pines has taken extraordinary steps to address the growing danger of wildfire and has been recognized by the local fire agency for its leadership in fire prevention efforts.

